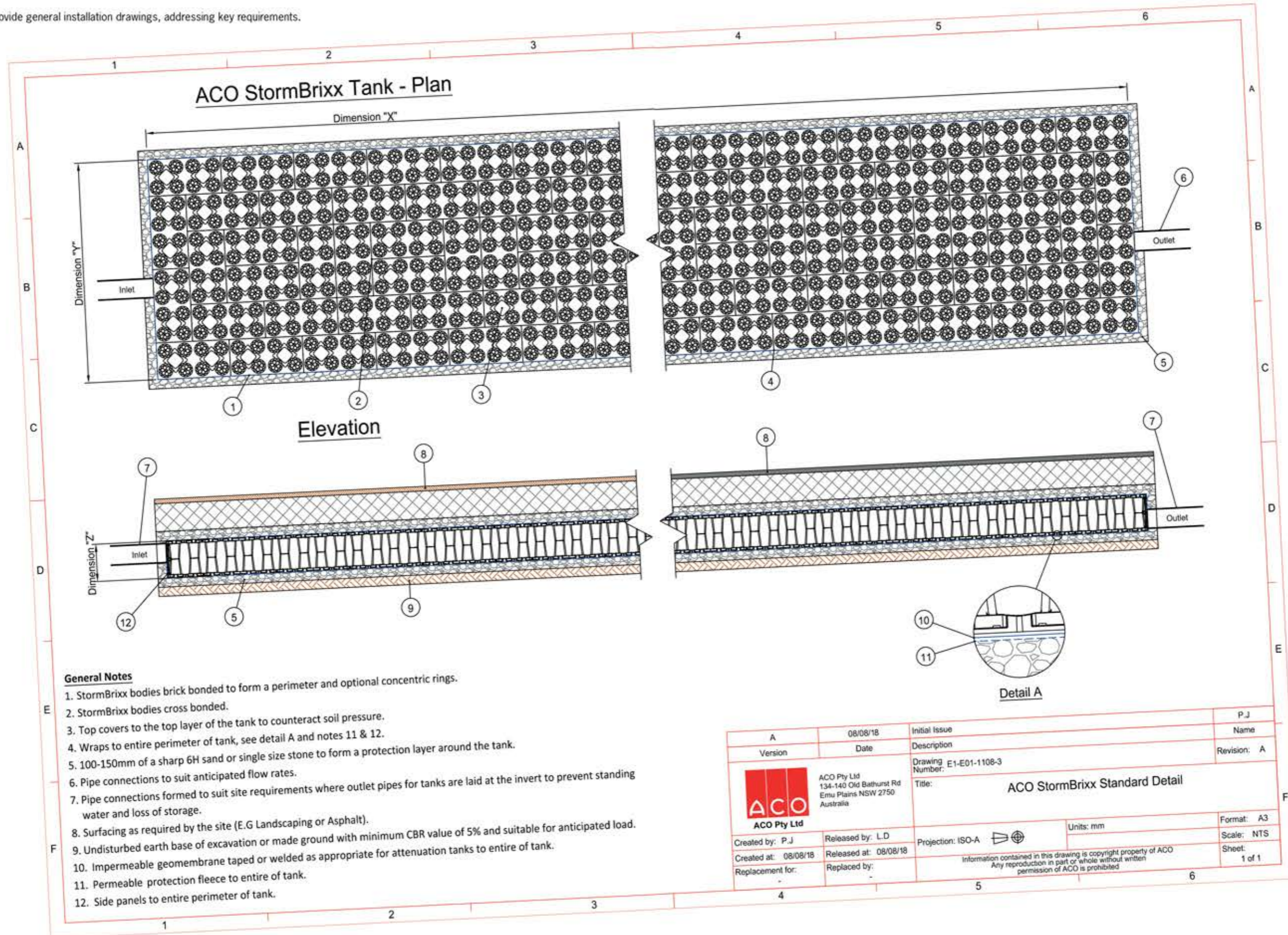



# Technical support

ACO will provide general installation drawings, addressing key requirements.



**General Notes**

1. StormBrixx bodies brick bonded to form a perimeter and optional concentric rings.
2. StormBrixx bodies cross bonded.
3. Top covers to the top layer of the tank to counteract soil pressure.
4. Wraps to entire perimeter of tank, see detail A and notes 11 & 12.
5. 100-150mm of a sharp 6H sand or single size stone to form a protection layer around the tank.
6. Pipe connections to suit anticipated flow rates.
7. Pipe connections formed to suit site requirements where outlet pipes for tanks are laid at the invert to prevent standing water and loss of storage.
8. Surfacing as required by the site (E.G Landscaping or Asphalt).
9. Undisturbed earth base of excavation or made ground with minimum CBR value of 5% and suitable for anticipated load.
10. Impermeable geomembrane taped or welded as appropriate for attenuation tanks to entire of tank.
11. Permeable protection fleece to entire of tank.
12. Side panels to entire perimeter of tank.

A	08/08/18	Initial Issue	P.J
Version	Date	Description	Name
		Drawing Number: E1-E01-1108-3	Revision: A
 ACO Pty Ltd 134-140 Old Bathurst Rd Emu Plains NSW 2750 Australia		Title: <b>ACO StormBrixx Standard Detail</b>	
Created by: P.J	Released by: L.D	Projection: ISO-A	Format: A3
Created at: 08/08/18	Released at: 08/08/18	Units: mm	Scale: NTS
Replacement for: -	Replaced by: -	Information contained in this drawing is copyright property of ACO Any reproduction in part or whole without written permission of ACO is prohibited	
			Sheet: 1 of 1